

unlimited access to your data

## Wiener Neustadt: Pump Stations and Rain Overfall Basins

### Background

With myDatanet Microtronics Engineering GmbH has developed an innovative wireless measurement acquisition system which is suitable for a wide range of applications. Due to wireless measuring instruments and data transfer via GPRS the collected data is available via the internet in real time at any time.



### Problem

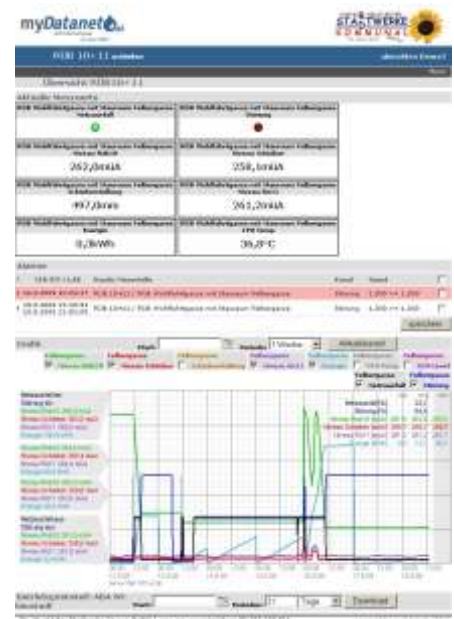
The Wiener Neustädter Stadtwerke und Kommunal Service GmbH which is in charge of the sewerage of the city of Wiener Neustadt wanted to establish a centrally managed alerting system for 19 pump stations and 4 rain overfall basins.

Pump stations of different series and types had to be considered. Stations more than 20 years old as well as recently installed equipment is in use. All these stations had to be united in one central system which can be monitored and controlled via the internet. In case of failure or electrical power outage the alerting has to be done via SMS or e-mail. Additionally measuring of the level and rain overfall should be registered and logged. Already existing sensors should also be integrated.

### Solution

In Wiener Neustadt the requirements were met by a myDatanet-50-stations-licence. Further measuring points can be easily added at every time. The central server was swiftly and easily installed in the data processing service center of the Wiener Neustädter Stadtwerke, in the old town hall.

On a survey map on the internet all measuring sites are illustrated by green lamps, which change to red in case of exceeding the value previously configured for alert, and an SMS or an e-mail is sent. All important information about the measuring site can be viewed immediately by clicking on the lamp. Due to the data being available in real-time and the clear diagrams the service team is informed about the happenings at the measurement site at a glance and can react accordingly. Additionally alert lists are displayed and daily reminders are sent if the fault is not rectified. According to the responsible persons from Wiener Neustädter Stadtwerke the application of this new system has delivered an optimal performance in practice.



### Measuring Points

For the measurement points different types of devices were used. They are able to manage from 3 to 12 freely configurable inputs (analogue or digital). Already existing analogue or digital sensors with standard interfaces can be integrated in the myDatanet-system without programming.

Signals such as the level of the pump sump, the level from the sensor of the rain overfall basins, a digital failure signal and power meter impulse have been activated. Also operating information like temperature, power supply and GSM field strength are collected. Rain overfall volume, flow rate etc. are acquired via calculation channels.



myDatalogMINI for Pump Stations



myDatalog8 for Rain Overfall Basins